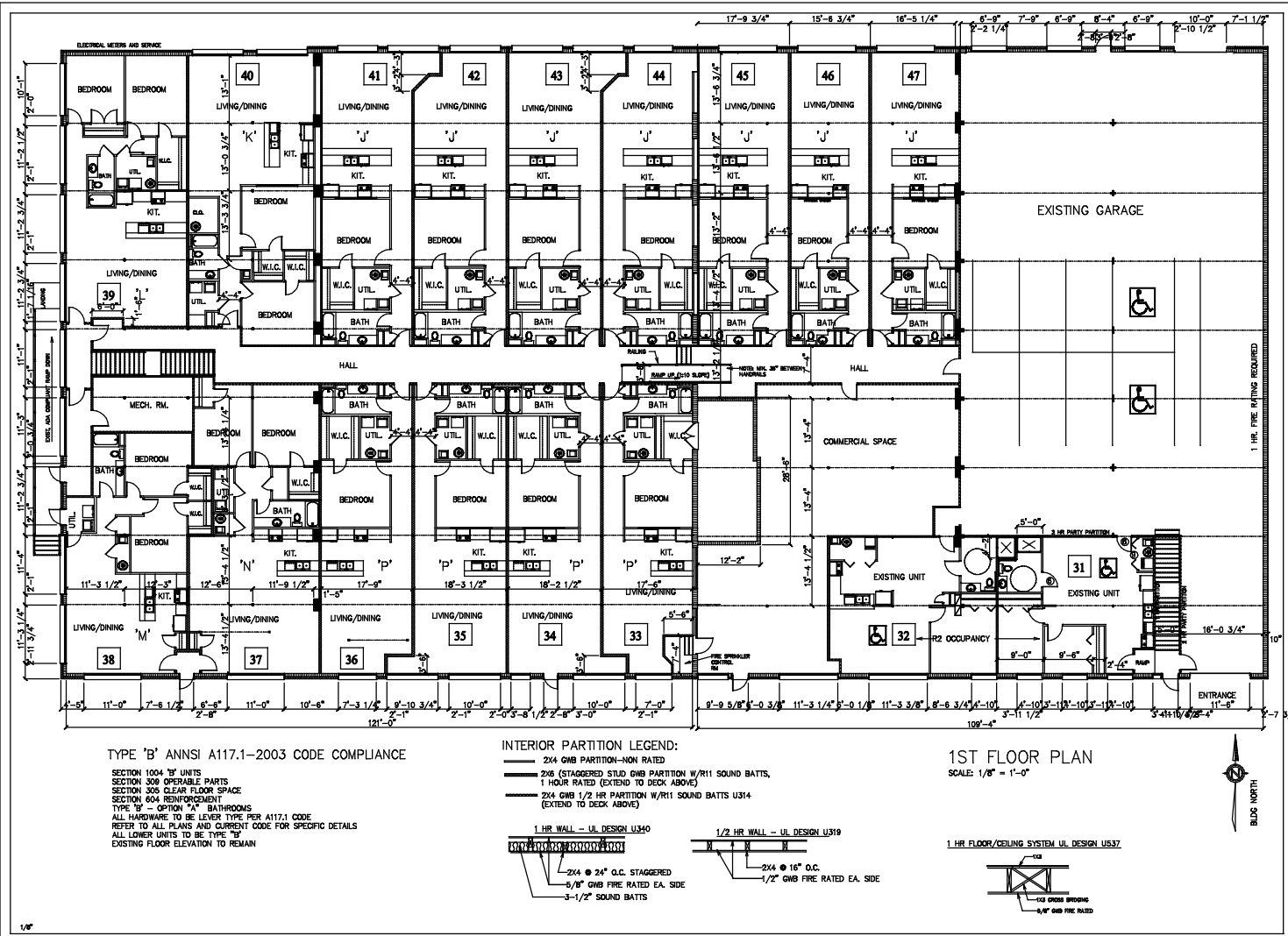


Please goto <http://www.autodwg.com> to register the program, the note will be removed.



TYPE 'B' ANNSI A117.1-2003 CODE COMPLIANCE
 SECTION 1004 'B' UNITS
 SECTION 308 OPERABLE PARTS
 SECTION 306 CLEAR FLOOR SPACE
 SECTION 604 REINFORCEMENT
 TYPE 'B' - OPTION 'A' BATHROOMS
 ALL HARDWARE TO BE LEVER TYPE PER A117.1 CODE
 REFER TO ALL PLANS AND CURRENT CODE FOR SPECIFIC DETAILS
 ALL LOWER UNITS TO BE TYPE 'B'
 EXISTING FLOOR ELEVATION TO REMAIN

INTERIOR PARTITION LEGEND:
 — 2X4 GMB PARTITION—NON RATED
 — 2X6 (STAGGERED STUD GMB PARTITION W/R11 SOUND BATTS,
 1 HOUR RATED) (EXTEND TO DECK ABOVE)
 — 2X4 GMB 1/2 HR PARTITION W/R11 SOUND BATTS U314
 (EXTEND TO DECK ABOVE)
 1 HR WALL - UL DESIGN U340
 1/2 HR WALL - UL DESIGN U319
 2X4 @ 24" O.C. STAGGERED
 5/8" GMB FIRE RATED EA. SIDE
 3-1/2" SOUND BATTS
 2X4 @ 16" O.C.
 1/2" GMB FIRE RATED EA. SIDE

1ST FLOOR PLAN
 SCALE: 1/8" = 1'-0"
 1 HR FLOOR/CEILING SYSTEM UL DESIGN U373
 1X3 CROSS BRIDGING
 5/8" GMB FIRE RATED

ENGINEERING SOLUTIONS
 BRIAN KOPPELBERG, P.E.
 1010 S MAIN STREET
 HARRISONBURG, VA 22802

SOTA DRAFTING
 1010 S MAIN STREET
 HARRISONBURG, VA 22802

DATE: 06-13-2009
 DRAWN BY: JDS
 CHECKED BY: JDS

PROJECT NO.: 06-013

REVISIONS:

PROJECT: MADISON INVESTMENTS
 SANCAR BUILDING RENOVATIONS
 HARRISONBURG, VA

SHEET NO.: A1